




ROTARY TOOLING + MAGNETIC CYLINDERS
OPTIMISE YOUR PRINTING + CONVERTING PROCESS

ROTARY TOOLING + MAGNETIC CYLINDERS



Cutting technology from
the pioneer

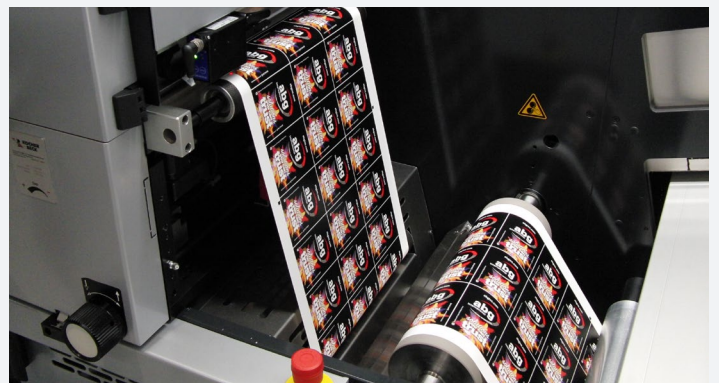
As early as 1981, **Kocher+Beck** was the first company in Europe to offer magnetic cutting technology. A process that was completely new at the time was brought up to the standard required for today's production environment.

Kocher+Beck's high technological standards in magnetic die cutting technology are also reflected in the manufacture of top-quality rotary tools and magnetic cylinders.

High End Running Performance + Perfection

Kocher+Beck's rotary tooling division includes cutting cylinders, magnetic cylinders, counter punch cylinders, printing cylinders, hot stamping cylinders and magnetic flat bases to name but a few.

These are key components in the printing and converting industry, and with our extensive experience you can take your product to the highest level of quality.



QUALITY BUILT + SERVICE DRIVEN

ROTARY TOOLING + MAGNETIC CYLINDERS

MAGNETIC CYLINDER

The high technological standards utilised in our magnetic die cutting manufacturing process are reflected in the production of our top-quality magnetic cylinders.

They are offered on the market in a maximum size of Ø 350 mm x 1250 mm.

Thanks to the innovative materials we use for their manufacture, they generate an exceptional magnetic force of 9.1 N/cm². If higher forces are required in your production process, this value can be increased 5-fold by using special magnets. The lower the tolerances, the more precise the results, and this is where **Kocher+Beck** exceeds expectations: Magnet cylinders with excellent concentricity and gap dimension tolerances of 3 µm or less.



PRINTING CLINDER

Kocher+Beck print cylinders represent the ultimate in precision, not least because they are super finished and have concentricity tolerances of a few µm .

The standard print cylinder body is made from high-strength aluminium or steel for individual machine types. The cylinders can also be supplied with our special anodised surface coating, which offers even greater durability.

Larger impression cylinders can be manufactured as lightweight cylinders in various designs for better handling.

For particularly high demands, the drive gears can be ground and/or hardened. This reduces the tooth engagement forces and the resulting abrasion caused by the continuous use of the impression cylinder and significantly improves the printing accuracy.



ROTARY TOOLING + MAGNETIC CYLINDERS

MAGNETIC ENVELOPE CYLINDER

Whether you require side, separating or window cuts, **Kocher+Beck** has the perfect carrier system for your job for all envelope machines with the appropriate cutting station.

Our product range includes both single and multiple suction systems.

Some of our standard cylinders are available from stock. We also manufacture custom or special designs on request.

Benefit from our many years of experience in envelope technology and deliver results that will delight your customers.

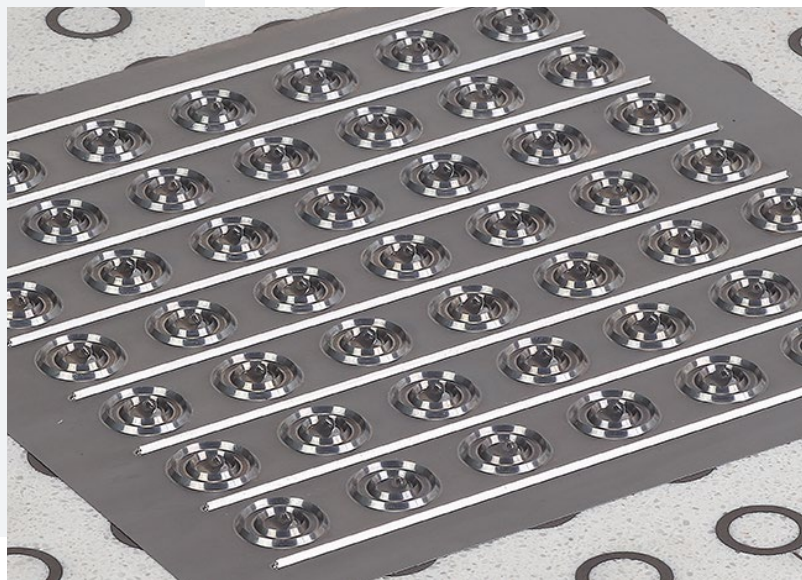


MAGNETIC FLAT BASE

Made of a hard, scratch-resistant material, magnetic flat bases, eliminate the previous disadvantages of conventional sheets and prevent deformation due to heat or mechanical influences under normal production conditions.

Conventional steel strip cuts often fail with modern, complex, self-adhesive materials. This is where **Kocher+Beck's** magnetic bases and punched plates come into their own. Our unique GRANOTec design ensures maximum productivity and optimum cutting results.

Kocher+Beck's product range also includes precise and cost-effective magnetic bases made of aluminium and steel for applications such as the Heidelberg platen press and Heidelberg cylinders.



ROTARY TOOLING + MAGNETIC CYLINDERS

CUTTING CYLINDER

All **Kocher+Beck** cylinders are manufactured using CNC technology to achieve the highest tolerances, ensure optimum concentricity and are tailored precisely to your requirements. The cutting edges are precision milled by machine.

The range includes cylinders up to approx. 400 mm diameter and a working width of up to 1250 mm, with fully hardened bearing rings and hardened bearing seats.

As with all our products, we are happy to discuss your individual requirements, including our Gluex and Longlife options for cutting cylinders.

Kocher+Beck cutting cylinders can be re-machined/re-ground several times, making them the ideal choice for large series.



ANVIL CYLINDER

High-precision **Kocher+Beck** anvil cylinders are characterised by exceptional durability, running accuracy and exemplary hardness levels. The bodies are super-finished with concentricity tolerances within 3 µm.

Kocher+Beck supplies anvil cylinders for all common machine types, special sizes are available on request. Manufactured from high quality hardened tool steel, super-finished and hardened to 62 - 64 HRC.

The bearer rings are fully hardened (depending on the machine type) and can be divided into plus or minus anvils to compensate for variations in material thickness as well as wear of the cutting tool. In this way, the service life of a flexible or solid cylinder is considerably extended.



ROTARY TOOLING + MAGNETIC CYLINDERS

SLITTER / REMALINER

For continuous slitting, perforating, edge trimming and formatting of material webs, **Kocher+Beck** cylinders are the optimal choice.

High-quality materials, production on modern CNC machines and our comprehensive know-how ensure that these versatile tools combine precision engineering with outstanding durability.

The axially adjustable positioning of the cutting discs compensates for fluctuations in the web and enables accurate longitudinal cutting/perforating with a precisely set cutting pattern.

Various sizes for all common machine types and special designs can be discussed with our team of experts and, depending on the degree of wear, the tool can be reground up to four times.

We can also supply replacement blades to adapt the tool for your specific application.



ROTARY TOOLING + MAGNETIC CYLINDERS

HOT STAMPING CYLINDERS

Kocher+Beck hot stamping cylinders are made of brass and manufactured to the finest tolerances.

With the most modern image and text processing systems as well as excellent technical capabilities, our cylinders can produce contour-precise and exact reproductions of even the most complicated motifs.

The smallest text and image motifs are milled into the cylinders with maximum depth. A unique polishing process additionally refines the cylinders and ensures incomparably brilliant hot stamping results.

Customers also have the option of purchasing cylinders with a hard chrome coating.

Our tools are perfect for hot stamping gold and silver foils. **Kocher+Beck** is one of the few manufacturers to offer a comprehensive maintenance, repair, and redesign service for hot stamping cylinders.

State-of-the-art machines and highly qualified employees ensure that we can meet almost any customer requirement.

When it comes to high-tech cylinders, **Kocher+Beck** is the first choice.





ENVELOPE TECHNOLOGY

ENVELOPE TECHNOLOGY

Optimum solutions for individual requirements

Kocher+Beck's use of magnetic die technology has revolutionised not only labelling and printing technology, but also envelope technology. Today, reel-fed envelope machines are able to produce a wide range of envelope sizes without elaborate format-change kits.

Smaller job run sizes and the ever-increasing demand for complexity in individual envelope jobs necessitate flexibility and effective production results.

Kocher+Beck guarantees a format diameter difference of up to 10mm. Even larger diameter differences are possible with so-called multi-exhaust pumps. With the standard axle from **Kocher+Beck** you can cut CD covers in the format 125x125mm just as you would a DL or C6 envelope.

Kocher+Beck is your ideal partner for optimum solutions. We advise you, work out your format precisely, produce an associated format drawing and individually manufacture the appropriate tool (flexible die).

Benefit from our long experience in envelope technology and deliver top results to your customers.



QUALITY BUILT + SERVICE DRIVEN

ENVELOPE TECHNOLOGY PRODUCTS

Magnetic Die Technology



Universal Flexible Dies

Flexible Dies 3L Laser Long Life hardness levels of 65 to 68 HRC.



Magnetic Cylinder Separating Cut

For all standard blank fed machines triple vacuum possible.



Magnetic Cylinder Form Cut

For all standard envelope machines. Format diameter difference up to 10mm.



Magnetic Cylinder Window Cut

For all standard blank fed machines triple vacuum possible.

Rotary Cylinder



Side Cutting Cylinder

For all standard envelope machines.



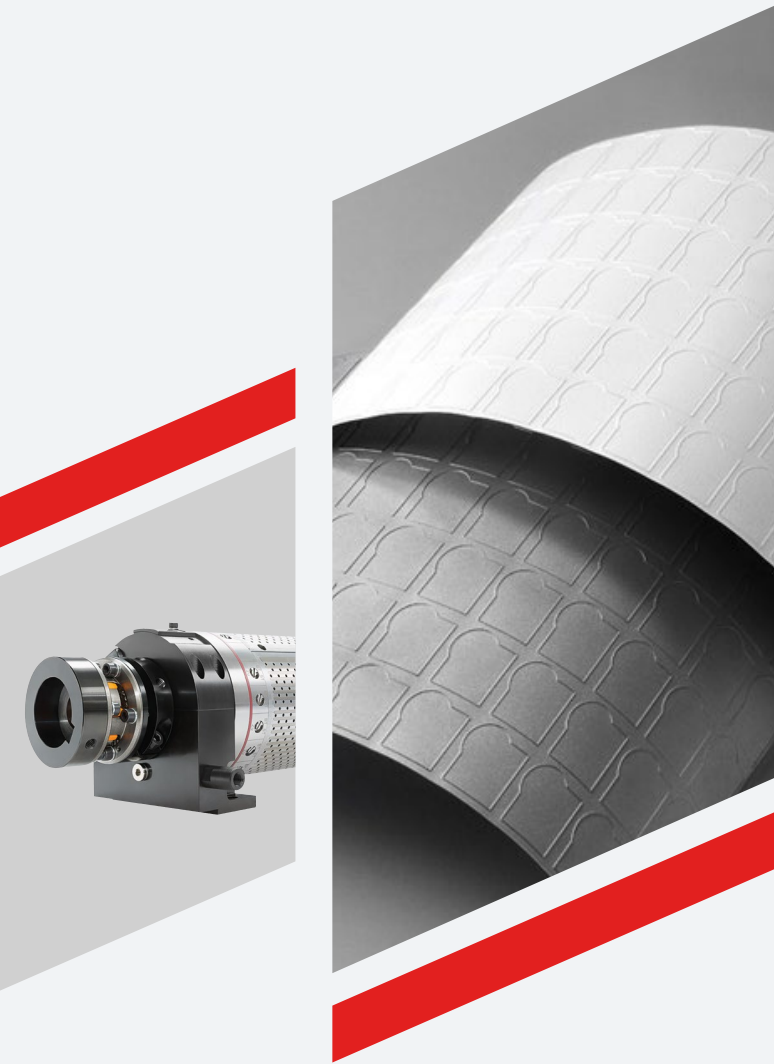
Separate Cutting Cylinder

For all standard blank fed machines.

Spare Parts

- | | |
|------------------|--------------------|
| Ceramic Bars | Scoring Knives |
| Brush Rollers | Window Gummers |
| Side Flap Gummer | Seal Flap Gummer |
| Segment Rollers | Ceramic Bar Holder |
| Transfer Rollers | |
| Adjustment Forks | |
| Glue Blade | |
| Vacuum Bar | |
| Scoring Knives | |





 **Contact Us**



Visit our Website